

**PLAT MAP RECORDING SHEET**

**INSTRUMENT # --**

**2000061649 11 PGS**

**DEDICATOR - COTTONWOOD ENTERPRISES INC., 452 LTD.**

**SUBDIVISION NAME - GABRIELS OVERLOOK SECTION TWO**

**MAP RECORDED IN - CABINET T SLIDE 66,67,68,69,70,71,72,73,74&75**

**PROPERTY FORMERLY KNOWN AS - 172.6197 AC FISK G SVY ABST 5 AND  
MANLOVE B SVY ABST 420**

**HAND TO - STEVE SORENSON, 244-4279**

**INSTRUMENT DATE - AUGUST 23, 2000**

**FILE DATE - SEPTEMBER 13, 2000**

**FILED AND RECORDED  
OFFICIAL PUBLIC RECORDS**

*Nancy E. Rister*

09-13-2000 03:53 PM 2000061649  
ANDERSON \$506.00  
NANCY E. RISTER, COUNTY CLERK  
WILLIAMSON COUNTY, TEXAS

# GABRIELS OVERLOOK – SECTION TWO

A PRIVATE SUBDIVISION IN PERPETUITY  
(NOT TO BE MAINTAINED BY WILLIAMSON COUNTY)

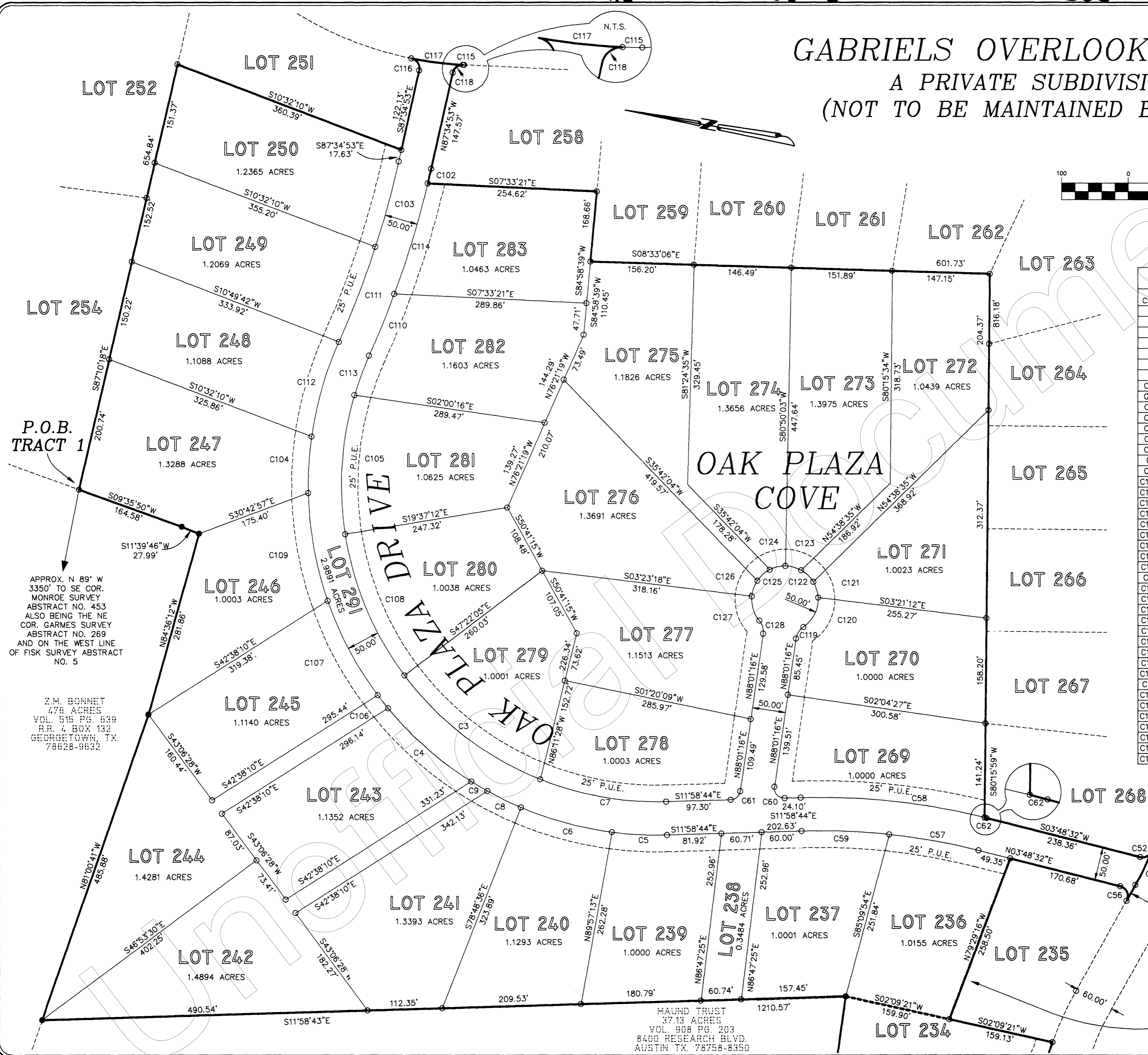
GRAPHIC SCALE



( IN FEET )  
1 inch = 100 ft.

CURVE TABLE					
CURVE	LENGTH	RADIUS	DIRECTION	CHORD	DEL' A
C3	260.48	475.00	S27°08'42"W	257.23	31°25'12"
C4	167.47	525.00	S30°59'43"W	166.76	18°16'36"
C5	83.40	525.00	S07°25'40"E	83.31	9°6'6"
C6	142.30	525.00	S04°53'16"W	141.86	15°31'47"
C7	194.11	475.00	S00°16'19"E	192.76	23°24'49"
C8	56.27	525.00	S15°43'23"W	56.24	6°8'26"
C9	28.07	525.00	S20°19'31"W	28.07	3°3'49"
C52	21.38	15.00	S37°01'47"E	19.62	81°40'38"
C53	56.33	470.00	S74°26'07"E	56.29	6°51'59"
C56	27.54	15.00	N56°24'12"E	23.83	105°11'21"
C57	136.60	975.00	N00°12'17"W	136.49	8°1'38"
C58	279.37	1025.00	N04°10'14"W	278.51	15°36'59"
C59	132.06	975.00	N08°05'55"W	131.96	7°45'38"
C60	26.18	15.00	S38°01'16"W	22.98	100°0'0"
C61	20.94	15.00	S51°58'44"E	19.28	80°0'0"
C62	3.06	1025.00	N03°43'24"E	3.06	0°10'17"
C102	22.31	1475.16	S87°08'53"E	22.31	0°51'59"
C103	133.19	1425.16	S84°54'15"E	133.14	5°21'17"
C104	85.12	525.00	S83°06'31"W	85.03	9°17'23"
C105	211.32	475.00	S83°34'10"W	209.58	25°29'25"
C106	25.13	525.00	S41°30'18"W	25.13	2°44'35"
C107	161.08	525.00	S51°39'59"W	160.45	17°34'47"
C108	231.87	475.00	S56°50'23"W	229.58	27°58'9"
C109	165.00	525.00	S69°27'36"W	164.32	18°0'27"
C110	99.92	1475.16	S78°01'09"E	99.90	3°52'51"
C111	152.92	1425.16	S79°09'10"E	152.85	6°8'52"
C112	148.14	525.00	N84°09'46"W	147.65	16°10'3"
C113	63.06	475.00	N79°52'56"W	63.02	7°36'24"
C114	173.92	1475.16	S83°20'14"E	173.82	6°45'19"
C115	1.64	530.00	S07°28'02"E	1.64	0°10'37"
C116	23.91	15.00	N46°44'47"E	21.46	91°20'40"
C117	78.19	530.00	S03°09'08"E	78.12	8°27'11"
C118	20.95	15.00	N47°34'07"W	19.29	80°1'32"
C119	21.03	25.00	N67°53'02"W	20.41	48°11'23"
C120	51.90	50.00	S73°31'26"E	49.60	59°28'10"
C121	25.00	50.00	N62°25'04"E	24.74	28°38'52"
C122	25.28	50.00	N33°36'34"E	25.01	28°58'8"
C123	25.00	50.00	N04°48'04"E	24.74	28°38'52"
C124	25.00	50.00	N23°50'48"W	24.74	28°38'52"
C125	25.29	50.00	N52°00'29"W	25.02	28°58'43"
C126	25.00	50.00	N80°49'16"W	24.74	28°38'52"
C127	39.29	50.00	S62°20'36"E	38.29	45°1'24"
C128	21.03	25.00	N63°55'36"E	20.41	48°11'24"

LEGEND  
● REBAR FOUND  
○ REBAR SET



P.O.B. TRACT 1

APPROX. N 89° W 3350' TO SE COR. MONROE SURVEY ABSTRACT NO. 453 ALSO BEING THE NE COR. GARMES SURVEY ABSTRACT NO. 269 AND ON THE WEST LINE OF FISK SURVEY ABSTRACT NO. 5

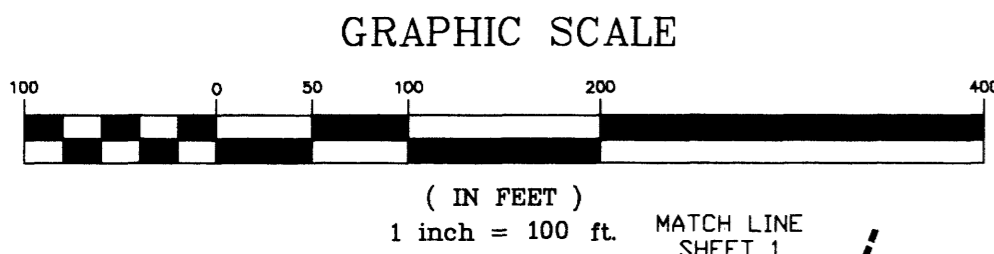
Z.M. BONNET  
478 ACRES  
VOL. 515 PG. 639  
R.R. 4 BOX 132  
GEORGETOWN, TX.  
78628-9632

MAUND TRUST  
37.13 ACRES  
VOL. 908 PG. 203  
8400 RESEARCH BLVD.  
AUSTIN TX. 78758-8350

PHOTOGRAPHIC MYLAR

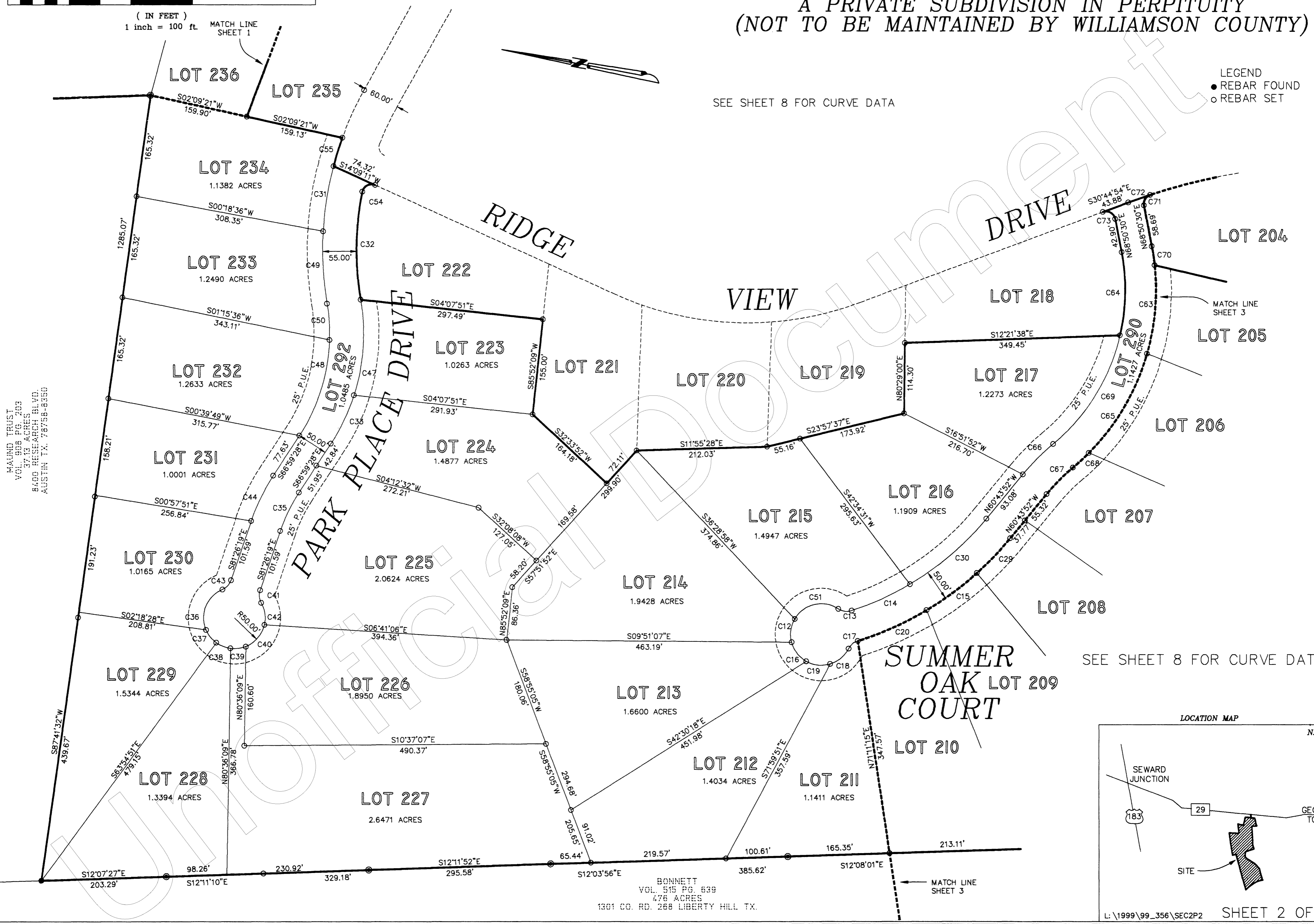
# Cabinet T Slide 67

## GABRIELS OVERLOOK – SECTION TWO A PRIVATE SUBDIVISION IN PERPETUITY (NOT TO BE MAINTAINED BY WILLIAMSON COUNTY)



SEE SHEET 8 FOR CURVE DATA

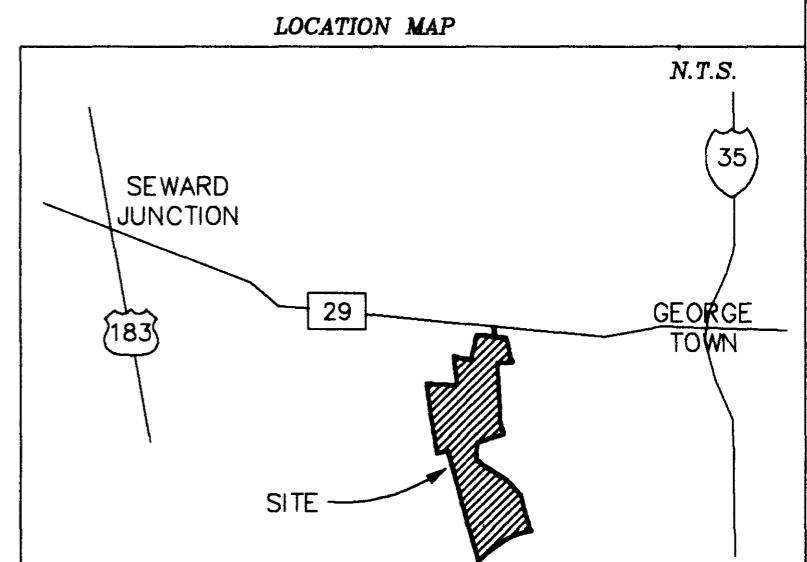
LEGEND  
● REBAR FOUND  
○ REBAR SET



MAJUND TRUST  
VOL. 888 PG. 203  
84.00 ACRES  
8400 RESEARCH BLVD  
AUSTIN TX 78758-8350

BONNETT  
VOL. 515 PG. 639  
476 ACRES  
1301 CO. RD. 288 LIBERTY HILL TX.

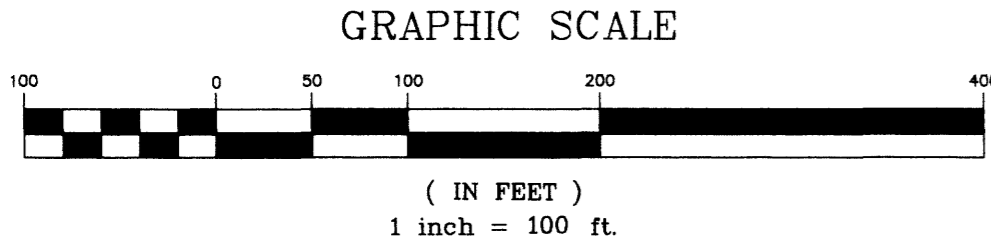
SEE SHEET 8 FOR CURVE DATA



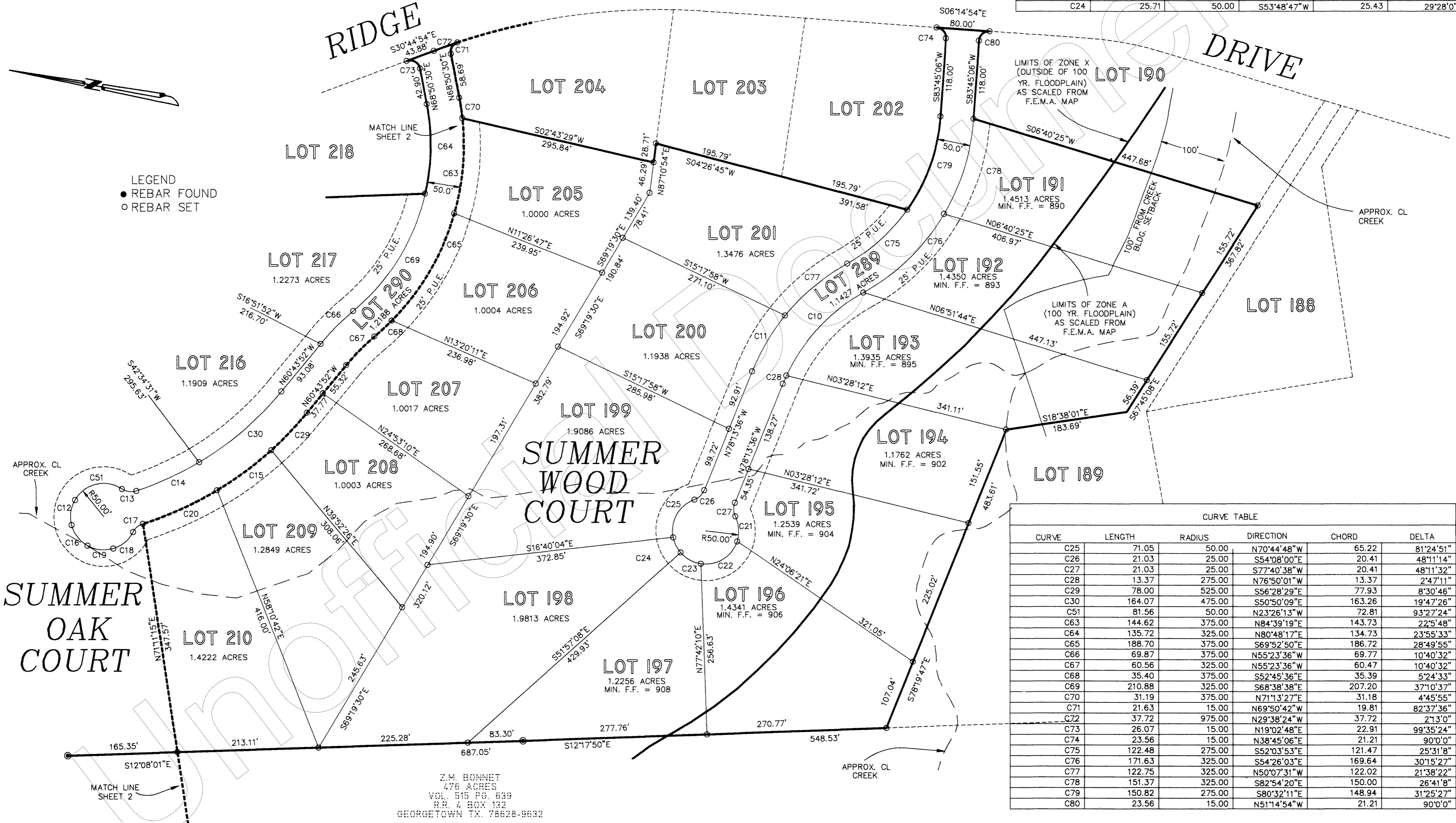
PHOTOGRAPHIC MYLAR

GABRIELS OVERLOOK – SECTION TWO  
 A PRIVATE SUBDIVISION IN PERPETUITY  
 (NOT TO BE MAINTAINED BY WILLIAMSON COUNTY)

CURVE TABLE					
CURVE	LENGTH	RADIUS	DIRECTION	CHORD	DELTA
C10	173.44	275.00	N57°22'22"W	170.58	36°8'6"
C11	98.03	325.00	N69°35'09"W	97.66	17°16'55"
C12	38.97	50.00	S87°30'30"W	37.99	44°39'9"
C13	22.54	25.00	S02°32'14"E	21.78	51°39'25"
C14	104.25	475.00	S34°39'11"E	104.04	12°34'30"
C15	101.66	525.00	S46°40'15"E	101.50	11°5'40"
C16	40.17	50.00	S42°09'50"W	39.10	46°2'11"
C17	19.73	25.00	N50°19'25"W	19.22	45°12'26"
C18	40.17	50.00	S49°54'32"E	39.10	46°2'11"
C19	40.17	50.00	S03°52'21"E	39.10	46°2'11"
C20	122.82	525.00	S34°25'19"E	122.54	13°24'13"
C21	38.90	50.00	N75°52'08"E	37.93	44°34'33"
C22	69.75	50.00	S41°52'55"E	64.23	79°55'21"
C23	35.78	50.00	S18°34'46"W	35.02	41°0'2"
C24	25.71	50.00	S53°48'47"W	25.43	29°28'0"



VIEW



CURVE TABLE					
CURVE	LENGTH	RADIUS	DIRECTION	CHORD	DELTA
C25	71.05	50.00	N70°44'48"W	65.22	81°24'51"
C26	21.03	25.00	S54°08'00"E	20.41	48°11'14"
C27	21.03	25.00	S77°40'38"W	20.41	48°11'32"
C28	13.37	275.00	N76°50'01"W	13.37	2°47'11"
C29	78.00	525.00	S56°28'29"E	77.93	8°30'46"
C30	164.07	475.00	S50°50'09"E	163.26	19°47'26"
C51	81.56	50.00	N23°26'13"W	72.81	93°27'24"
C63	144.62	375.00	N84°39'19"E	143.73	22°5'48"
C64	135.72	325.00	N80°48'17"E	134.73	23°55'33"
C65	188.70	375.00	S69°52'50"E	186.72	28°49'55"
C66	69.87	375.00	N55°23'36"W	69.77	10°40'32"
C67	60.56	325.00	N55°23'36"W	60.47	10°40'32"
C68	35.40	375.00	S52°45'36"E	35.39	5°24'33"
C69	210.88	325.00	S68°38'38"E	207.20	37°10'37"
C70	31.19	375.00	N71°13'27"E	31.18	4°45'55"
C71	21.63	15.00	N69°50'42"W	19.81	82°37'36"
C72	37.72	975.00	N29°38'24"W	37.72	2°13'0"
C73	26.07	15.00	N19°02'48"E	22.91	99°35'24"
C74	23.56	15.00	N38°45'06"E	21.21	90°0'0"
C75	122.48	275.00	S52°03'53"E	121.47	25°31'8"
C76	171.63	325.00	S54°26'03"E	169.64	30°15'27"
C77	122.75	325.00	N50°07'31"W	122.02	21°38'22"
C78	151.37	325.00	S82°54'20"E	150.00	26°41'8"
C79	150.82	275.00	S80°32'11"E	148.94	31°25'27"
C80	23.56	15.00	N51°14'54"W	21.21	90°0'0"

PHOTOGRAPHIC MYLAR

Z.M. BONNET  
 478 ACRES  
 VOL. 915 PG. 639  
 R.R. 4 BOX 132  
 GEORGETOWN, TX. 78628-9632



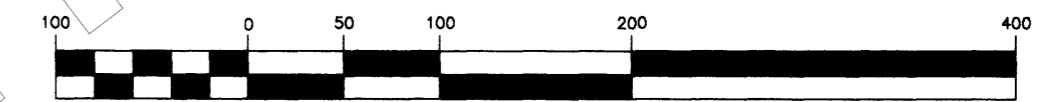
# Cabinet T Slide 69

## GABRIELS OVERLOOK – SECTION TWO A PRIVATE SUBDIVISION IN PERPETUITY (NOT TO BE MAINTAINED BY WILLIAMSON COUNTY)

### LAKE SIDE DRIVE

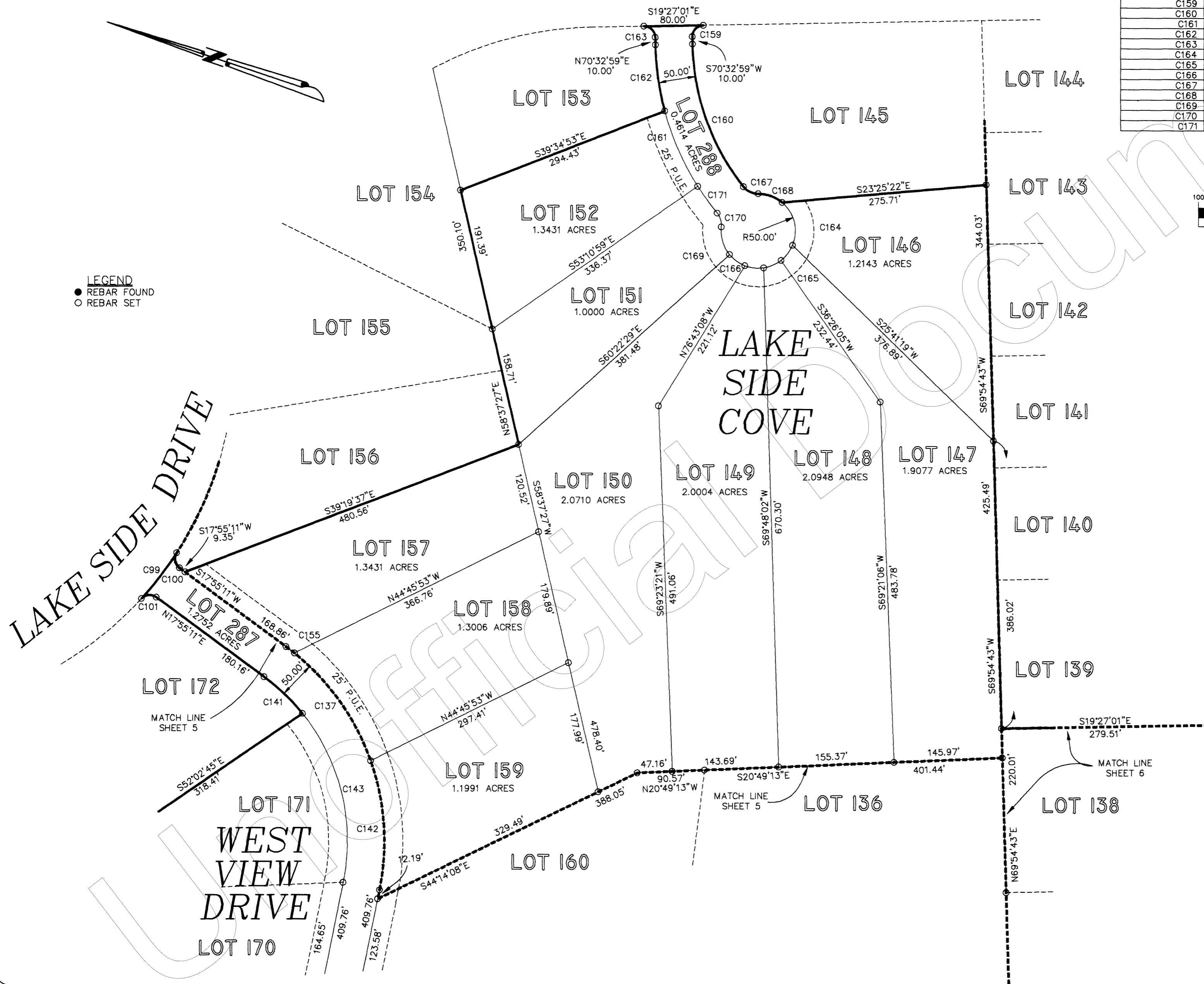
CURVE TABLE					
CURVE	LENGTH	RADIUS	DIRECTION	CHORD	DELTA
C99	77.66	475.00	S70°40'56"E	77.57	9°22'3"
C100	22.70	15.00	S61°16'37"W	20.60	86°42'51"
C101	21.97	15.00	N24°02'22"W	20.06	83°55'5"
C137	179.45	325.00	N36°14'29"E	177.18	31°38'10"
C141	71.62	275.00	N25°22'51"E	71.42	14°55'19"
C142	175.56	325.00	N67°32'05"E	173.44	30°57'4"
C143	240.79	275.00	N57°55'34"E	233.17	50°10'7"
C155	14.20	325.00	N19°10'17"E	14.20	2°30'13"
C156	3.96	425.00	N72°12'08"E	3.96	0°32'4"
C157	25.77	50.00	S41°33'10"E	25.49	29°31'52"
C158	25.77	50.00	N12°01'18"W	25.49	29°31'52"
C159	23.56	15.00	S64°27'01"E	21.21	90°0'0"
C160	206.69	314.43	S51°43'17"W	202.98	37°39'45"
C161	110.87	364.43	N47°43'29"E	110.44	17°25'52"
C162	89.74	364.43	S63°29'53"W	89.52	14°6'34"
C163	23.56	15.00	N25°32'59"E	21.21	90°0'0"
C164	63.37	50.00	N57°50'27"E	59.21	72°37'9"
C165	25.77	50.00	N71°05'02"W	25.49	29°31'52"
C166	25.77	50.00	S17°30'34"W	25.49	29°31'52"
C167	22.53	25.00	S07°04'15"W	21.78	51°38'18"
C168	35.15	50.00	S01°23'30"W	34.43	40°16'47"
C169	39.46	50.00	S54°53'07"W	38.45	45°13'15"
C170	19.86	25.00	N54°44'23"E	19.34	45°30'42"
C171	44.68	364.43	N35°29'47"E	44.66	7°1'30"

### GRAPHIC SCALE

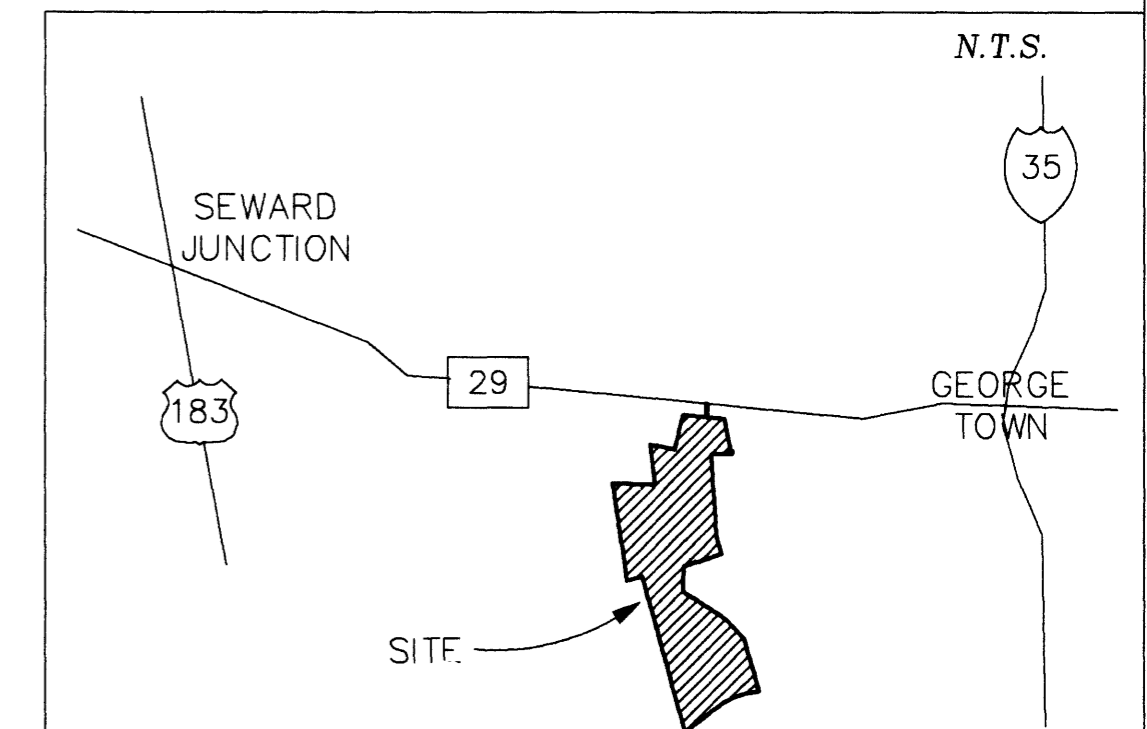


( IN FEET )  
1 inch = 100 ft.

LEGEND  
● REBAR FOUND  
○ REBAR SET



### LOCATION MAP



Cabinet T Slide 70

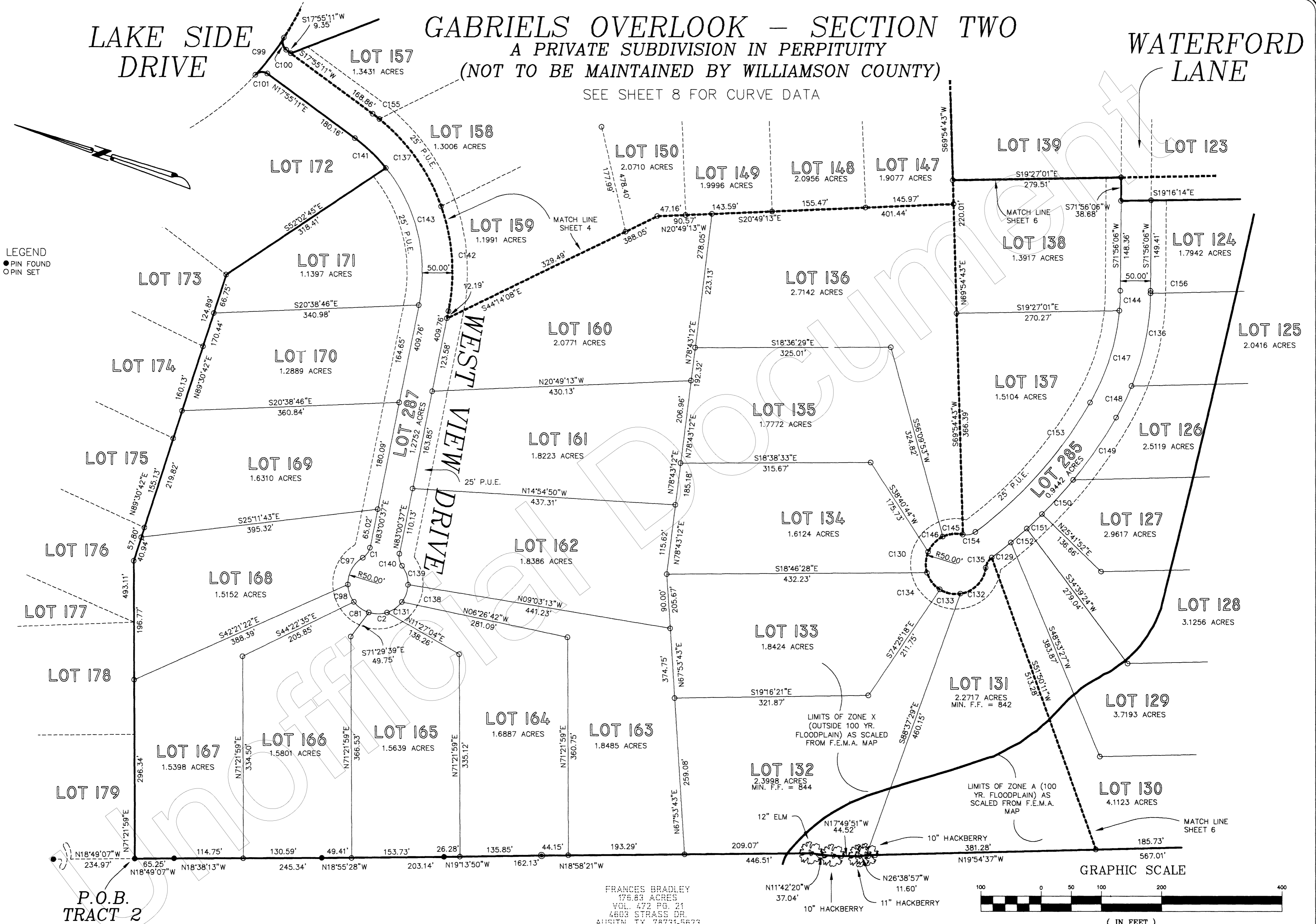
LAKE SIDE DRIVE

# GABRIELS OVERLOOK – SECTION TWO

A PRIVATE SUBDIVISION IN PERPETUITY  
(NOT TO BE MAINTAINED BY WILLIAMSON COUNTY)

WATERFORD LANE

SEE SHEET 8 FOR CURVE DATA



LEGEND  
● PIN FOUND  
○ PIN SET

PHOTOGRAPHIC MYLAR

P.O.B.  
TRACT 2

FRANCES BRADLEY  
176.83 ACRES  
VOL. 472 PG. 21  
4809 STRASS DR.  
AUSTIN, TX. 78731-5623

LIMITS OF ZONE X  
(OUTSIDE 100 YR.  
FLOODPLAIN) AS SCALED  
FROM F.E.M.A. MAP

LIMITS OF ZONE A (100  
YR. FLOODPLAIN) AS  
SCALED FROM F.E.M.A.  
MAP

12" ELM  
10" HACKBERRY  
11" HACKBERRY

GRAPHIC SCALE

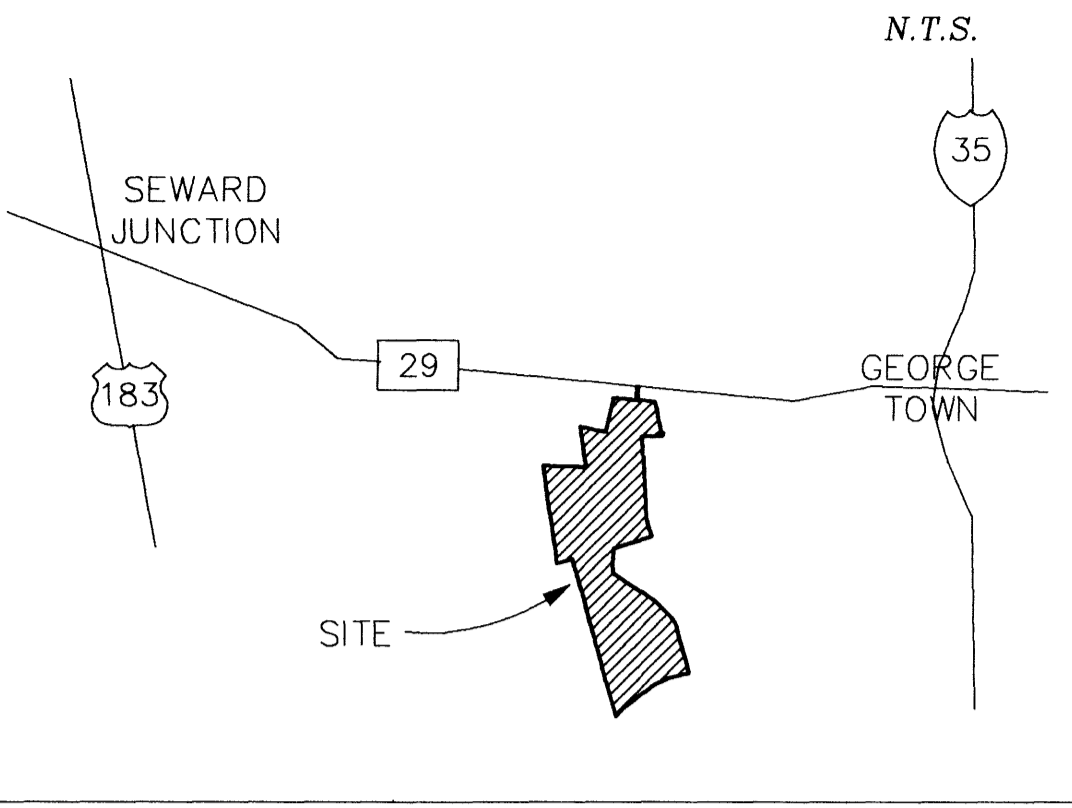


( IN FEET )  
1 inch = 100 ft.  
L:\1999\99\_356\SEC2P5

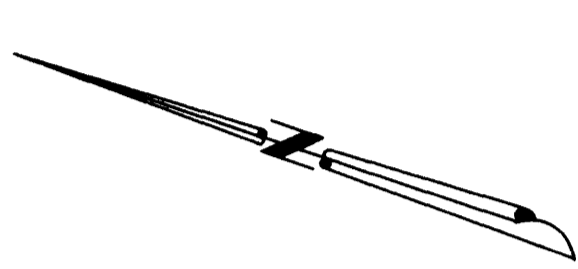
# GABRIELS OVERLOOK – SECTION TWO

## A PRIVATE SUBDIVISION IN PERPETUITY

(NOT TO BE MAINTAINED BY WILLIAMSON COUNTY)



CURVE TABLE					
CURVE	LENGTH	RADIUS	DIRECTION	CHORD	DELTA
C135	20.13	25.00	N78°08'43"W	19.59	46°8'13"
C136	157.79	425.00	N83°06'21"E	156.89	21°16'22"
C137	179.45	325.00	N36°14'29"E	177.18	31°38'10"
C138	30.82	50.00	S88°50'00"E	30.33	35°18'50"
C139	33.76	50.00	N54°09'55"E	33.12	38°41'21"
C140	21.03	25.00	S58°54'56"W	20.41	48°11'24"
C141	71.62	275.00	N25°22'51"E	71.42	14°55'19"
C142	175.56	325.00	N67°32'05"E	173.44	30°57'4"
C143	240.79	275.00	N57°55'34"E	233.17	50°10'7"
C144	33.10	375.00	N74°27'51"E	33.09	5°3'29"
C145	34.25	50.00	N24°31'57"W	33.59	39°15'2"
C146	35.55	50.00	N64°31'41"W	34.81	40°44'26"
C147	161.14	375.00	N89°18'13"E	159.91	24°37'15"
C148	58.39	425.00	S82°19'19"E	58.34	7°52'19"
C149	125.14	768.02	S73°43'06"E	125.00	9°20'8"
C150	76.86	768.02	S66°11'00"E	76.83	5°44'3"
C151	35.00	768.02	S62°00'39"E	35.00	2°36'40"
C152	35.00	768.02	S59°23'59"E	35.00	2°36'40"
C153	288.46	718.02	S66°52'37"E	286.52	2°31'5"
C154	22.02	25.00	S30°08'15"E	21.31	50°27'39"
C155	14.20	325.00	N19°10'17"E	14.20	2°30'13"
C156	3.96	425.00	N72°12'08"E	3.96	0°32'4"



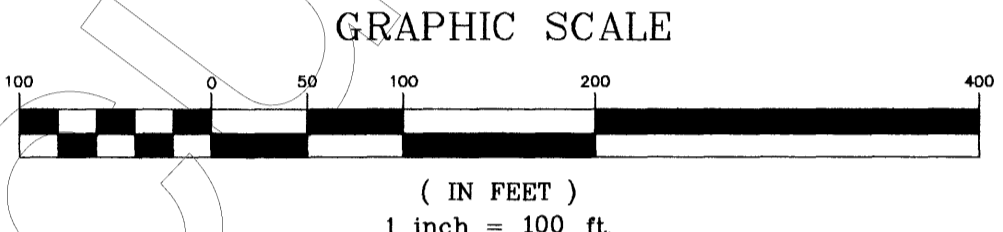
WATERFORD LANE

B. MANLOVE  
SURVEY AB. # 420  
GREENLEAF FISK  
SURVEY AB. # 5

LOT 121

LOT 122

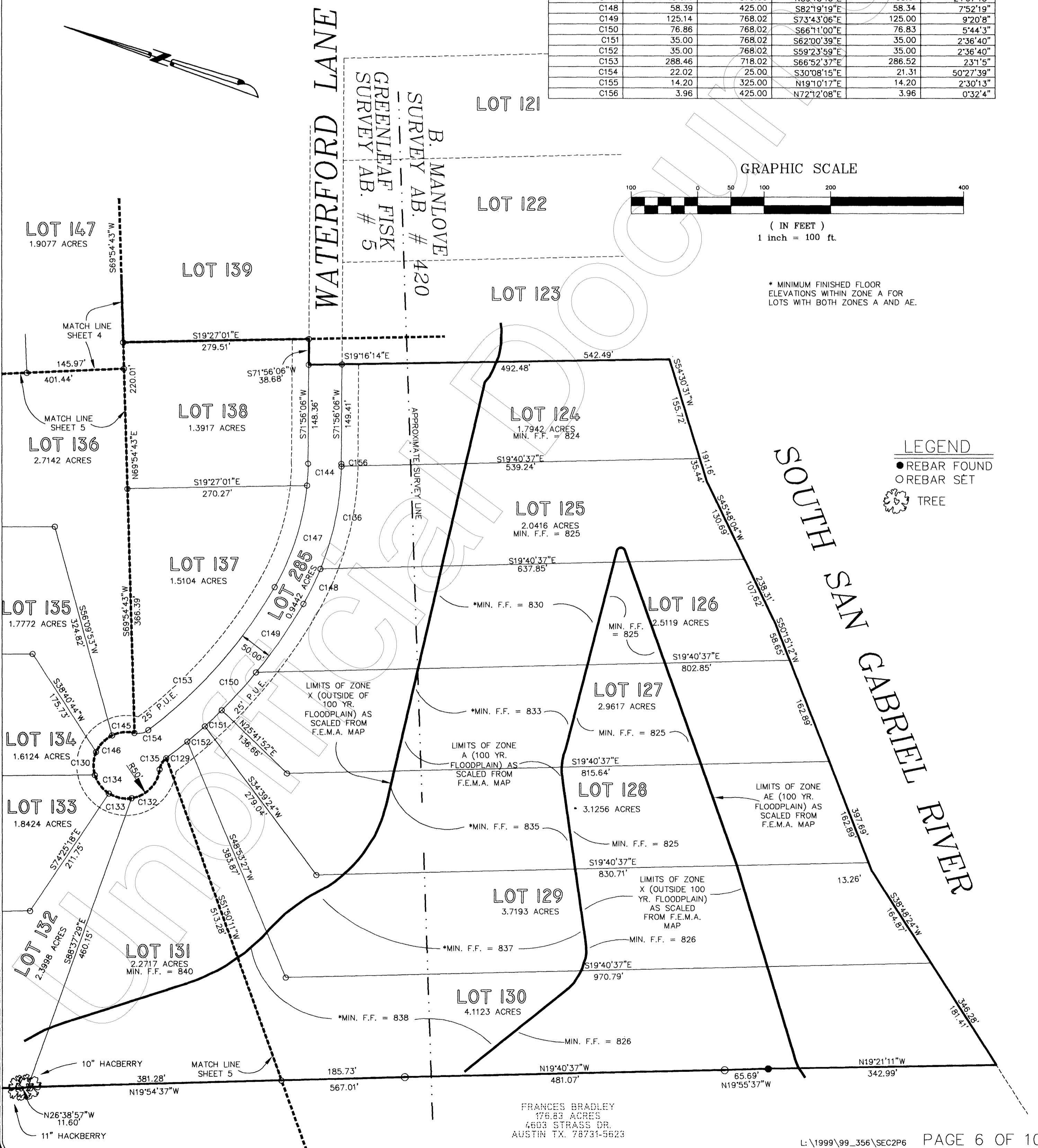
LOT 123



\* MINIMUM FINISHED FLOOR ELEVATIONS WITHIN ZONE A FOR LOTS WITH BOTH ZONES A AND AE.

**LEGEND**

- REBAR FOUND
- REBAR SET
- ⊗ TREE



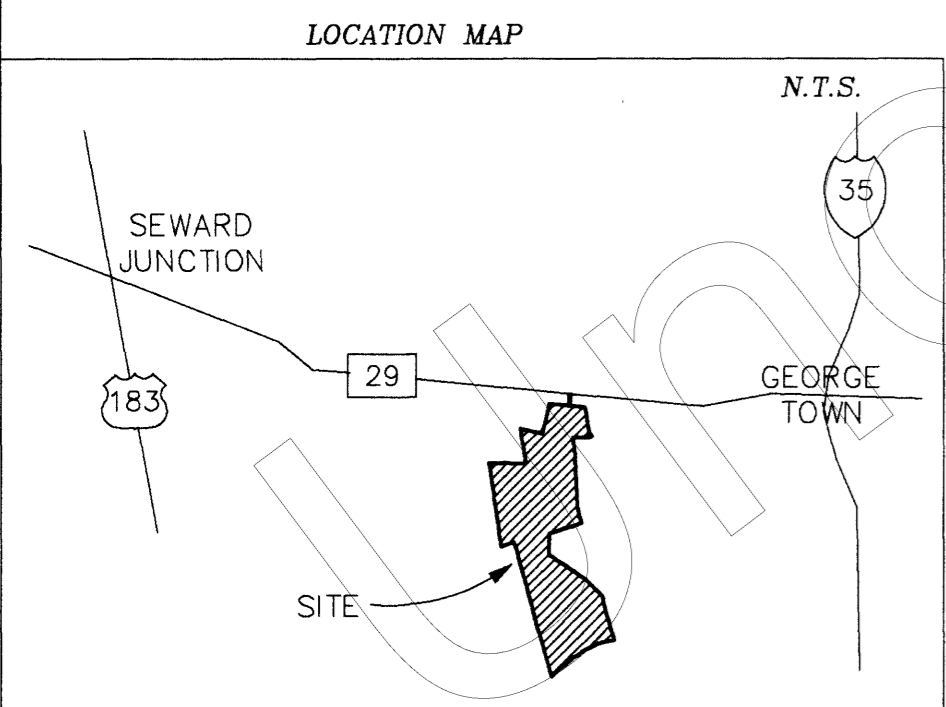
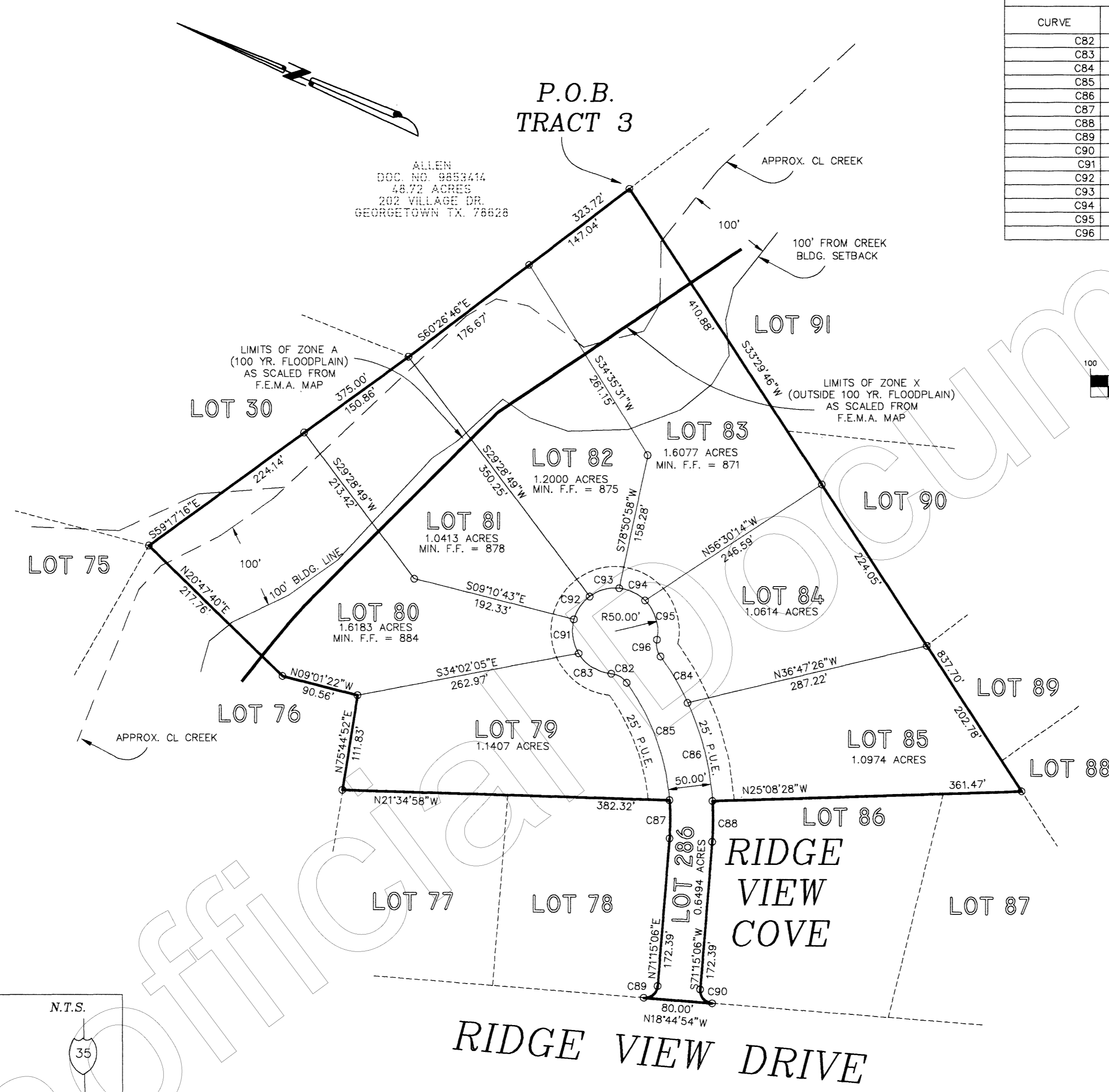
SOUTH SAN GABRIEL RIVER

Cabinet T Slide 71

FRANCES BRADLEY  
176.83 ACRES  
4603 STRASS DR.  
AUSTIN TX. 78731-5623

# Cabinet T Slide 72

CURVE TABLE					
CURVE	LENGTH	RADIUS	DIRECTION	CHORD	DELTA
C82	21.54	25.00	N06°34'31"E	20.88	49°22'22"
C83	46.43	50.00	S08°29'34"W	44.78	53°12'27"
C84	62.74	325.00	N36°27'08"E	62.65	11°3'41"
C85	147.50	275.00	N48°37'37"E	145.73	30°43'49"
C86	118.57	325.00	N52°26'04"E	117.91	20°54'12"
C87	44.44	275.00	N66°37'19"E	44.39	9°15'34"
C88	47.45	325.00	N67°04'08"E	47.41	8°21'55"
C89	23.56	15.00	S63°44'54"E	21.21	90°0'0"
C90	23.56	15.00	S26°15'06"W	21.21	90°0'0"
C91	41.26	50.00	S58°44'19"W	40.10	47°17'4"
C92	32.89	50.00	N78°46'27"W	32.30	37°41'24"
C93	36.61	50.00	N38°57'19"W	35.79	41°56'53"
C94	34.16	50.00	N01°35'37"E	33.50	39°9'0"
C95	49.82	50.00	N49°42'38"E	47.78	57°5'2"
C96	20.65	25.00	S54°35'13"W	20.07	47°19'52"



**GABRIELS OVERLOOK – SECTION TWO**  
 A PRIVATE SUBDIVISION IN PERPETUITY  
 (NOT TO BE MAINTAINED BY WILLIAMSON COUNTY)

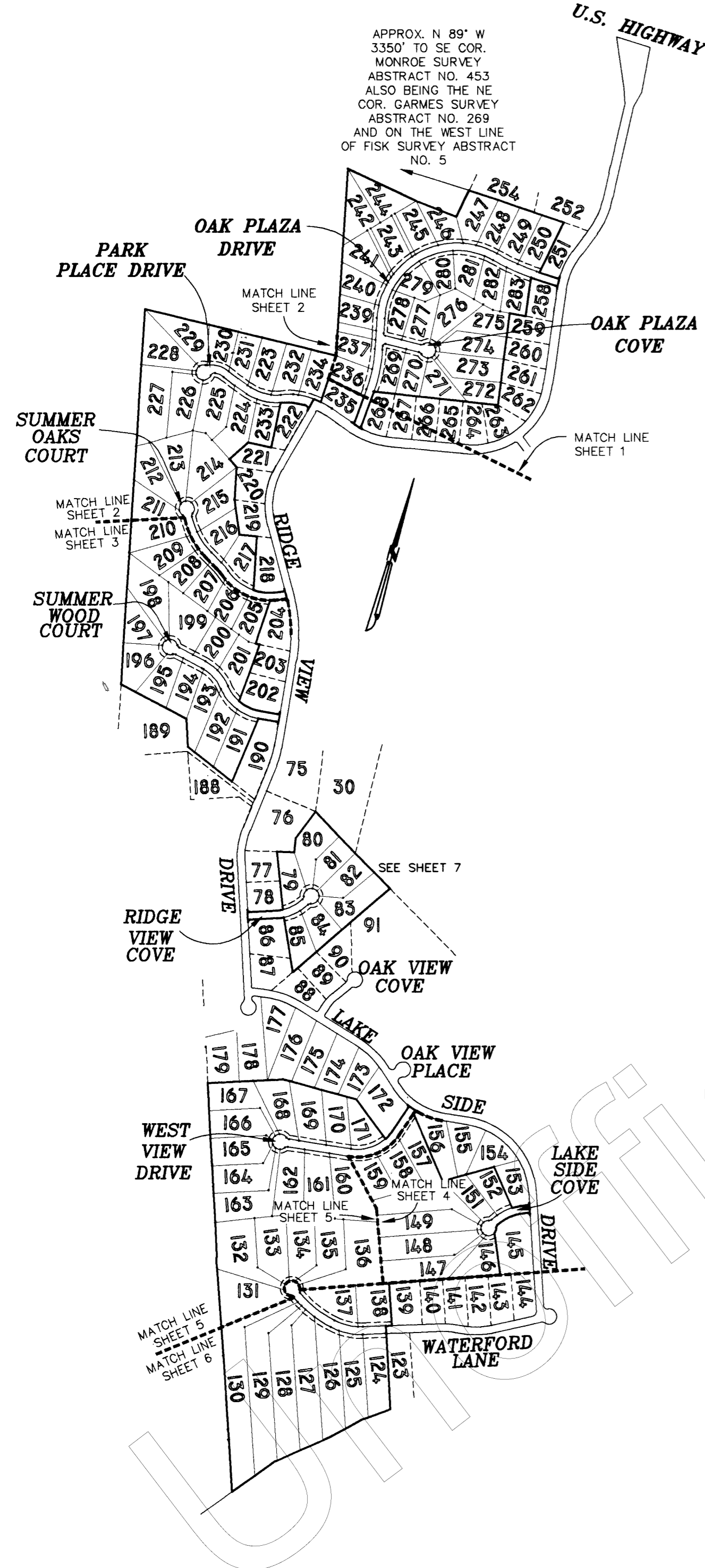
PHOTOGRAPHIC MYLAR



## GABRIELS OVERLOOK-SECTION TWO A PRIVATE SUBDIVISION IN PERPITUITY (NOT TO BE MAINTAINED BY WILLIAMSON COUNTY)

APPROX. N 89° W  
3350' TO SE COR.  
MONROE SURVEY  
ABSTRACT NO. 453  
ALSO BEING THE NE  
COR. GARMES SURVEY  
ABSTRACT NO. 269  
AND ON THE WEST LINE  
OF FISK SURVEY ABSTRACT  
NO. 5

U.S. HIGHWAY 29

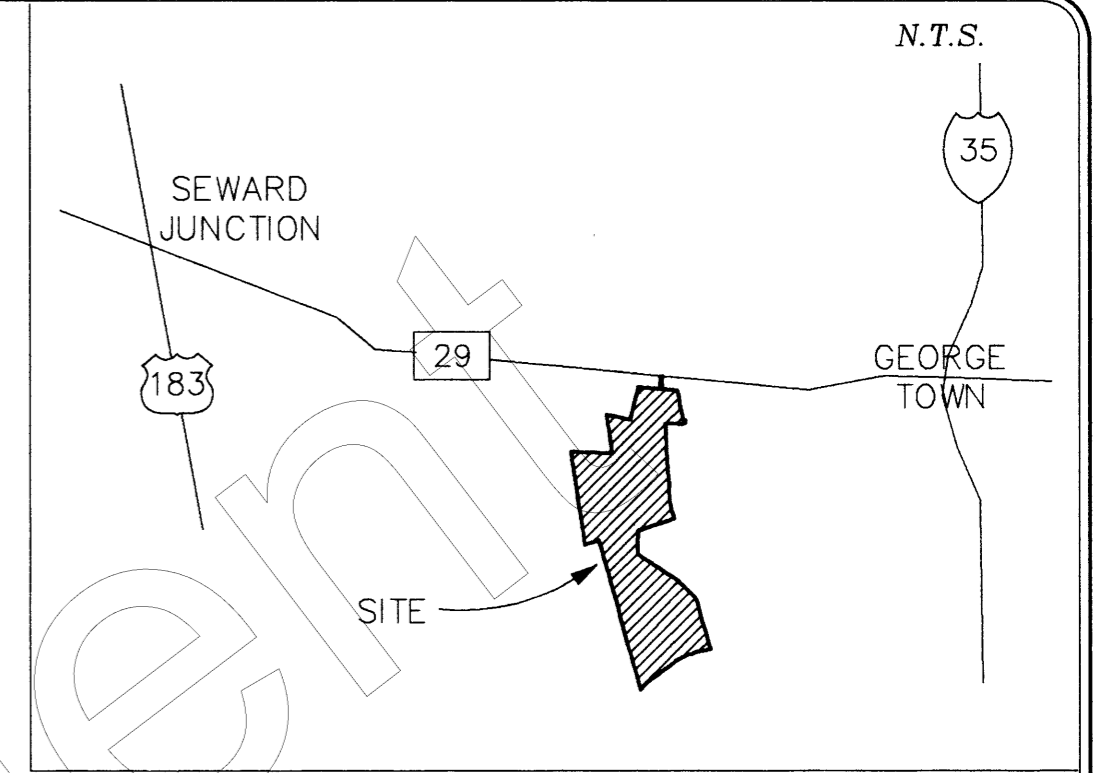


**CURVE TABLE**

C	LENGTH	RADIUS	DIRECTION	CHORD	DELTA
C1	21.03	25.00	S72°53'42"E	20.41	48°11'23"
C2	30.82	50.00	S18°12'20"E	30.33	35°18'50"
C3	260.48	475.00	S27°08'42"W	257.23	31°25'12"
C4	167.47	525.00	S30°59'43"W	166.76	18°16'36"
C5	83.40	525.00	S07°25'40"E	83.31	9°6'6"
C6	142.30	525.00	S04°53'16"W	141.86	15°31'47"
C7	194.11	475.00	S00°16'19"E	192.76	23°24'49"
C8	56.27	525.00	S15°43'23"W	56.24	6°8'26"
C9	28.07	525.00	S20°19'31"W	28.07	3°3'49"
C10	173.44	275.00	N57°22'22"E	170.58	36°8'6"
C11	98.03	325.00	N69°35'09"W	97.66	17°16'55"
C12	38.97	50.00	S87°30'30"W	37.99	44°39'9"
C13	22.54	25.00	S02°32'14"E	21.78	51°39'25"
C14	104.25	475.00	S34°39'11"E	104.04	12°34'30"
C15	101.66	525.00	S46°40'15"E	101.50	11°5'40"
C16	40.17	50.00	S42°09'50"W	39.10	46°2'11"
C17	19.73	25.00	N50°19'25"W	19.22	45°12'26"
C18	40.17	50.00	S49°54'32"E	39.10	46°2'11"
C19	40.17	50.00	S03°52'21"E	39.10	46°2'11"
C20	122.82	525.00	S34°25'19"E	122.54	13°24'13"
C21	38.90	50.00	N75°52'08"E	37.93	44°34'33"
C22	69.75	50.00	S41°52'55"E	64.23	79°55'21"
C23	35.78	50.00	S18°34'46"W	35.02	41°0'2"
C24	25.71	50.00	S53°48'47"W	25.43	29°28'0"
C25	71.05	50.00	N70°44'48"W	65.22	81°24'51"
C26	21.03	25.00	S54°08'00"E	20.41	48°11'14"
C27	21.03	25.00	S77°40'38"W	20.41	48°11'32"
C28	13.37	275.00	N76°50'01"W	13.37	2°47'11"
C29	78.00	525.00	S56°28'29"E	77.93	8°30'46"
C30	164.07	475.00	S50°50'09"E	163.26	19°47'26"
C31	107.30	530.00	S88°48'07"W	107.11	11°35'57"
C32	176.02	475.00	S80°36'24"W	175.01	21°13'55"
C33	87.31	325.00	N74°41'13"W	87.04	15°23'29"
C34	153.72	1496.39	S69°08'28"E	153.66	5°53'9"
C35	69.34	275.00	S74°12'53"E	69.16	14°26'50"
C36	78.67	50.00	N78°19'30"W	70.80	90°09'08"
C37	26.63	50.00	N41°20'33"E	26.31	30°30'47"
C38	25.00	50.00	S11°45'43"W	24.74	28°38'52"
C39	25.42	50.00	S17°07'31"E	25.14	29°07'36"
C40	48.37	50.00	S59°24'17"E	46.51	55°25'58"
C41	21.03	25.00	S74°28'00"W	20.41	48°11'23"
C42	37.09	50.00	N71°37'31"E	36.25	42°30'25"
C43	21.03	25.00	S57°20'37"E	20.41	48°11'23"
C44	81.95	325.00	N74°12'53"W	81.73	14°26'50"
C45	143.06	311.55	S86°10'10"E	141.81	26°18'35"
C46	24.30	1496.39	S72°32'57"E	24.30	0°55'50"
C47	156.61	325.00	N83°48'47"E	155.10	27°36'32"
C48	164.67	300.00	N82°42'58"W	162.61	31°26'59"
C49	117.42	530.00	N76°39'20"E	117.18	12°41'37"
C50	58.91	300.00	S75°56'02"W	58.81	11°15'01"
C51	81.56	50.00	N23°26'13"W	72.81	93°27'24"
C52	21.38	15.00	S37°01'47"E	19.62	81°40'38"
C53	56.33	470.00	S74°26'07"E	56.29	6°51'59"
C54	26.95	15.00	N37°18'44"W	23.47	102°55'49"
C55	48.15	530.00	N82°47'40"W	48.13	5°12'19"
C56	27.54	15.00	N56°24'12"E	23.83	105°11'21"
C57	136.60	975.00	N00°12'17"W	136.49	8°1'38"
C58	279.37	1025.00	N04°10'14"W	278.51	15°36'59"
C59	132.06	975.00	N08°05'55"W	131.96	7°45'38"
C60	26.18	15.00	S38°01'16"W	22.98	100°0'0"
C61	20.94	15.00	S51°58'44"E	19.28	80°0'0"
C62	3.06	1025.00	N03°43'24"E	3.06	0°10'17"
C63	144.62	375.00	N84°39'19"E	143.73	22°5'48"
C64	135.72	325.00	N80°48'17"E	134.73	23°55'33"
C65	188.70	375.00	S69°52'50"E	186.72	28°49'55"
C66	69.87	375.00	N55°23'36"W	69.77	10°40'32"
C67	60.56	325.00	N55°23'36"W	60.47	10°40'32"
C68	35.40	375.00	S52°45'36"E	35.39	5°24'33"
C69	210.88	325.00	S68°38'38"E	207.20	37°10'37"
C70	31.19	375.00	N71°13'27"E	31.18	4°45'55"
C71	21.63	15.00	N69°50'42"W	19.81	82°37'36"
C72	37.72	975.00	N29°38'24"W	37.72	2°13'0"
C73	26.07	15.00	N19°02'48"E	22.91	99°35'24"
C74	23.56	15.00	N38°45'06"E	21.21	90°0'0"
C75	122.48	275.00	S52°03'53"E	121.47	25°31'8"
C76	171.63	325.00	S54°26'03"E	169.64	30°15'27"
C77	122.75	325.00	N50°07'31"W	122.02	21°38'22"
C78	151.37	325.00	S82°54'20"E	150.00	26°41'8"
C79	150.82	275.00	S80°32'11"E	148.94	31°25'27"
C80	23.56	15.00	N51°14'54"W	21.21	90°0'0"
C81	30.82	50.00	S17°06'30"W	30.33	35°18'50"
C82	21.54	25.00	N06°34'31"E	20.88	49°22'22"

**CURVE TABLE**

C	LENGTH	RADIUS	DIRECTION	CHORD	DELTA
C83	46.43	50.00	S08°29'34"W	44.78	53°12'27"
C84	62.74	325.00	N36°27'08"E	62.65	11°3'41"
C85	147.50	275.00	N46°37'37"E	145.73	30°43'49"
C86	118.57	325.00	N52°26'04"E	117.91	20°54'12"
C87	44.44	275.00	N66°37'19"E	44.39	9°15'34"
C88	47.45	325.00	N67°04'08"E	47.41	8°21'55"
C89	23.56	15.00	S63°44'54"E	21.21	90°0'0"
C90	23.56	15.00	S26°15'06"W	21.21	90°0'0"
C91	41.26	50.00	S58°44'19"W	40.10	47°17'4"
C92	32.89	50.00	N78°46'27"W	32.30	37°41'2"
C93	36.61	50.00	N38°57'19"W	35.79	41°56'53"
C94	34.16	50.00	N01°35'37"E	33.50	39°9'0"
C95	49.82	50.00	N49°42'38"E	47.78	57°5'2"
C96	20.65	25.00	S54°35'13"W	20.07	47°19'52"
C97	53.34	50.00	N79°21'38"W	50.84	6°17'16"
C98	30.82	50.00	S52°25'20"W	30.33	35°18'49"
C99	77.66	475.00	S70°40'56"E	77.57	9°22'3"
C100	22.70	15.00	S61°16'37"W	20.60	86°42'51"
C101	21.97	15.00	N24°02'22"W	20.06	83°55'5"
C102	22.31	1475.16	S87°08'53"E	22.31	0°51'59"
C103	133.19	1425.16	S84°54'15"E	133.14	5°21'17"
C104	85.12	525.00	S83°06'31"W	85.03	9°17'23"
C105	211.32	475.00	S83°34'10"W	209.58	25°29'25"
C106	25.13	525.00	S41°30'18"W	25.13	2°44'35"
C107	161.08	525.00	S51°39'59"W	160.45	17°34'47"
C108	231.87	475.00	S56°50'23"W	229.58	27°58'9"
C109	165.00	525.00	S69°27'36"W	164.32	18°0'27"
C110	99.92	1475.16	S78°01'09"E	99.90	3°52'51"
C111	152.92	1425.16	S79°09'10"E	152.85	6°8'52"
C112	148.14	525.00	N84°09'46"W	147.65	16°10'3"
C113	63.06	475.00	N79°52'56"W	63.02	7°36'24"
C114	173.92	1475.16	S83°20'14"E	173.82	6°45'19"
C115	1.64	530.00	S07°28'02"E	1.64	0°10'37"
C116	23.91	15.00	N46°44'47"E	21.46	91°20'40"
C117	78.19	530.00	S03°09'08"E	78.12	8°27'11"
C118	20.95	15.00	N47°34'07"W	19.29	80°1'32"
C119	21.03	25.00	N67°53'02"W	20.41	48°11'23"
C120	51.90	50.00	S73°31'26"E	49.60	59°28'10"
C121	25.00	50.00	N62°25'04"E	24.74	28°38'52"
C122	25.28	50.00	N33°36'34"E	25.01	28°58'8"
C123	25.00	50.00	N40°48'04"E	24.74	28°38'52"
C124	25.00	50.00	N23°50'48"W	24.74	28°38'52"
C125	25.29	50.00	N52°00'29"W	25.02	28°58'43"
C126	25.00	50.00	N80°49'16"W	24.74	28°38'52"
C127	39.29	50.00	S62°20'36"W	38.29	45°1'24"
C128	21.03	25.00	N63°55'36"E	20.41	48°11'24"
C129	40.44	768.02	S56°35'08"E	40.44	3°1'2"
C130	35.55	50.00	S74°43'53"W	34.81	40°44'26"
C131	30.82	50.00	S53°31'10"E	30.33	35°18'50"
C132	64.66	50.00	S64°10'01"E	60.25	74°5'38"
C133	35.55	50.00	S06°44'59"E	34.81	40°44'26"
C134	35.55	50.00	S33°59'27"W	34.81	40°44'26"
C135	20.13	25.00	N78°08'43"W	19.59	46°8'13"
C136	157.79	425.00	N83°06'21"E	156.89	21°16'22"
C137	179.45	325.00	N36°14'29"E	177.18	31°38'10"
C138	30.82	50.00	N50°00'00"E	30.33	35°18'50"
C139	33.76	50.00	N54°09'55"E	33.12	38°41'21"
C140	21.03	25.00	S58°54'56"W	20.41	48°11'24"
C141	71.62	275.00	N25°22'51"E	71.42	14°55'19"
C142	175.56	325.00	N67°32'05"E	173.44	30°57'4"
C143	240.79	275.00	S57°55'34"E	233.17	50°10'7"
C144	33.10	375.00	N74°27'51"E	33.09	5°3'29"
C145	34.25	50.00	N24°31'57"W	33.59	39°15'2"
C146	35.55	50.00	N64°31'41"W	34.81	40°44'26"
C147	161.14	375.00	N89°18'13"E	159.91	24°37'15"
C148	58.39	425.00	S82°19'19"E	58.34	7°52'19"
C149	125.14	768.02	S73°43'06"E	125.00	9°20'8"
C150	76.86	768.02	S66°11'00"E	76.83	5°44'3"
C151	35.00	768.02	S62°00'39"E	35.00	2°36'40"
C152	35.00	768.02	S59°23'59"E	35.00	2°36'40"
C153	288.46	718.02	S66°52'37"E	286.52	2°31'5"
C154	22.02	25.00	S30°08'15"E	21.31	50°27'39"
C155	14.20	325.00	N19°10'17"E	14.20	2°30'13"
C156	3.96	425.00	N72°12'08"E	3.96	0°32'4"
C157	25.77	50.00	S41°33'10"E	25.49	29°31'52"
C158	25.77	50.00	N12°01'18"W	25.49	29°31'52"
C159	23.56	15.00	S64°27'01"E	21.21	90°0'0"
C160	206.69	314.43	S51°43'17"W	202.98	37°39'45"
C161	110.87	364.43	N47°43'29"E	110.44	17°25'52"
C162	89.74	364.43	S63°29'53"W	89.52	14°6'34"
C163	23.56	15.00	N25°32'59"E	21.21	90°0'0"
C164	63.37	50.00	N57°50'27"E	59.21	72°37'9"
C165	25.77	50.00	N71°05'02"W	25.49	29°31'52"



**CURVE TABLE**

C	LENGTH	RADIUS	DIRECTION	CHORD	DELTA
C166	25.77	50.00	S		

GABRIELS OVERLOOK - SECTION TWO  
A PRIVATE SUBDIVISION IN PERPETUITY  
(NOT TO BE MAINTAINED BY WILLIAMSON COUNTY)

STATE OF TEXAS:  
COUNTY OF WILLIAMSON:

THAT 452 LTD. A TEXAS LIMITED PARTNERSHIP BY COTTONWOOD ENTERPRISES INC. WITH ITS HOME OFFICE IN AUSTIN, TEXAS ACTING HEREIN THROUGH ITS PRESIDENT REX D. BOHLS, BEING THE OWNER OF THAT CERTAIN 449.985 ACRE TRACT OF LAND OUT OF THE GREENLEIF FISK SURVEY ABSTRACT NO. 5 AND THE BARTHOLOMEW MANLOVE SURVEY ABSTRACT NO. 420 RECORDED IN DOCUMENT NO. 199947956 OFFICIAL RECORDS OF WILLIAMSON COUNTY, TEXAS

DO HEREBY PLAT SAME AND DO HEREBY ADOPT THIS MAP OR PLAT OF 172.6197 ACRES TO BE KNOWN AS "GABRIELS OVERLOOK SECTION TWO", AND DO HEREBY DEDICATE THE UTILITY EASEMENTS TO THE PUBLIC FOREVER.

WITNESS MY HAND AND SEAL OF OFFICE THIS 23 DAY OF August, 2000.

Rex D. Bohls  
REX D. BOHLS, PRESIDENT  
COTTONWOOD ENTERPRISES INC.  
1301 SOUTH I.H. 35 SUITE 200  
AUSTIN, TEXAS 78741  
PH. 512-447-4414 FAX 512-447-2392

STATE OF TEXAS:  
COUNTY OF WILLIAMSON:

BEFORE ME, THE UNDERSIGNED NOTARY PUBLIC IN AND FOR SAID COUNTY AND STATE, ON THIS DAY PERSONALLY APPEARED REX D. BOHLS, KNOWN TO ME TO BE THE PERSON WHOSE NAME IS SUBSCRIBED TO THE FOREGOING INSTRUMENT AND ACKNOWLEDGED THAT THEY EXECUTED THE SAME FOR THE PURPOSE AND CONSIDERATION THEREIN EXPRESSED AND IN THE CAPACITY THEREIN STATED.

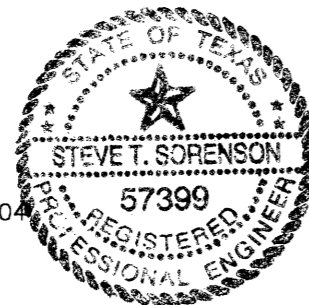
GIVEN UNDER MY HAND AND SEAL OF OFFICE THIS 23 DAY OF AUGUST, 2000.

Stephanie Perkins  
NOTARY PUBLIC IN AND FOR THE STATE OF TEXAS



This tract is located in the Edwards Aquifer Recharge Zone as indicated on the Texas Water Commission Recharge Zone Maps.

Steve T. Sorenson  
Steve T. Sorenson, P.E. No. 57399 Date 8/24/00  
Corridor Engineering Company  
307 Sunset Drive  
Round Rock, Texas 78664 PH. 512-244-4279 FAX 512-244-0504

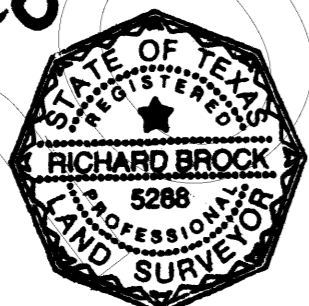


STATE OF TEXAS:  
COUNTY OF WILLIAMSON:

I, the undersigned, a registered professional land surveyor in the State of Texas, hereby certify that this plat is true and correctly made and is prepared from an actual survey of the property made under my supervision on the ground and that the corner monuments were properly placed under my supervision and that the plat is, to the best of my professional capability true and correct. And that the field notes shown hereon form a mathematically closed figure.

Portions of this subdivision lie within the 100 year flood plain as identified by F.E.M.A. National Flood Insurance Program Map No. 481079 0225 C, dated September 27, 1991, for Williamson County, Texas.

Richard Brock 8-23-00  
Richard Brock, R.P.L.S. 5288  
Crichton and Associates  
107 North Lampasas  
Round Rock, Texas 78664  
512-244-3395



STATE OF TEXAS:  
COUNTY OF WILLIAMSON:

Based upon the above representations of the surveyor whose seal is affixed hereto, and after a review of the plat as represented by the said surveyor, I find this plat complies with the requirements of Edwards Aquifer Regulations for Williamson County, the Williamson County Flood plain regulations, and Williamson County onsite sewerage facility regulations this certification is made solely upon such representations and should not be relied upon for verification of the facts alleged. The Williamson County Health District and Williamson County disclaims any responsibility to any member of the public for independent verification of the representation factual or otherwise, contained in this plat and the documents associated with it.

Paulo Pinto 8/25 9/1/00  
Paulo Pinto, Director of Environmental Services Date

Williamson County Commissioners' Court approval

In approving this plat by the Commissioners' Court of Williamson County, Texas it is understood that the building of all streets, roads and other public thoroughfares and any bridges or culverts necessary to be constructed or placed, is the responsibility of the owners of the tract of land covered by this plat in accordance with plans and specifications prescribed by the Commissioners' Court of Williamson County, Texas. Said Commissioners' Court of Williamson County, Texas assumes no obligation to build or maintain the streets, roads, or other public thoroughfares shown on this plat, or in constructing any bridges or drainage improvements in connection therewith. It is further understood that the streets, roads and other public thoroughfares shown here are private and the county assumes no responsibility or obligation for construction or maintenance. And further responsibility for maintenance for all roads within this subdivision shall be the sole responsibility of the property owners and or the property owners association.

The county assumes no responsibility for the accuracy of representations by other parties in this plat. Flood plain data, in particular, may change depending on subsequent development. It is further understood that the owners of the tract of land covered by this plat must install at their own expense all traffic control devices and signage that may be required before the streets in the subdivision have finally been accepted for maintenance by the County.

STATE OF TEXAS:  
WILLIAMSON COUNTY:

I, JOHN DOERFLER, County Judge of Williamson County Texas, do hereby certify that this map or plat, with written field notes shown hereon, and the surveyor's certificate appearing hereon, known as "GABRIELS OVERLOOK SECTION ONE" having been duly presented to the Commissioners Court of Williamson County, Texas, and by said court was duly considered, was on this day approved, and said plat is authorized to be registered and recorded in the proper records of the County Clerk of Williamson County, Texas.

John C. Doerfler 9-13-00 9-12-00  
John C. Doerfler, County Judge, Williamson County, Texas Date

STATE OF TEXAS:  
COUNTY OF WILLIAMSON:

I, Nancy E. Rister, Clerk of the County Court, within and for the County and State aforesaid, do hereby certify that the foregoing instrument of writing, with its certificate of authentication, was filed for record in my office on the 22 day of September, 2000 A.D., At 9:40 o'clock A.m., and was duly recorded on this the 13 day of September, 2000 A.D., At 2:53 o'clock P.m., in the plat records of said county in Cabinet I Slides 64, 67, 68, 69, 70, 71, 72, 73, 74 & 75. Witness my hand and seal of the County Court of said County, at my office in Georgetown, Texas, the last date written above.

By: Nancy E. Rister BY: Remy Anderson  
Nancy E. Rister, County Court, Williamson County, Texas Deputy



PHOTOGRAPHIC MYLAR



# Cabinet T Slide 75

## GABRIELS OVERLOOK SECTION TWO A PRIVATE SUBDIVISION IN PERPETUITY (NOT TO BE MAINTAINED BY WILLIAMSON COUNTY)

FIELD NOTES FOR THREE TRACTS TOTALING 172.6197 ACRES OUT OF THE GREENLEAF FISK SURVEY ABSTRACT NO. 5 AND THE B. MANLOVE SURVEY ABSTRACT NO. 420 IN WILLIAMSON COUNTY, TEXAS BEING A PORTION OF A 449.985 ACRE TRACT CONVEYED IN DOC. NO. 199947956 OFFICIAL RECORDS OF WILLIAMSON COUNTY, TEXAS. SAID TRACT MORE PARTICULARLY DESCRIBED BY METES AND BOUNDS AS FOLLOWS:  
TRACT 1:

Beginning at a 1/2" rebar found on the East line of a 476 acre tract conveyed to Bonnet in Volume 515 Page 639 Deed Records of Williamson County, Texas also being the West line of said 449.985 acre tract and the Southwest corner of Lot 254 Gabriels Overlook Section One a subdivision recorded in Cabinet S Slides 218-229 Plat Records of Williamson County, Texas. And from said rebar the Southeast corner of the Monroe Survey Abstract No. 453 bears Approx. N 89° W, 3350 feet.

THENCE through the interior of said 449.985 acre tract also being a line in common with Gabriels Overlook Section One and the tract herein described the following fifty four (54) courses:

- 1) S 87° 10' 18" E, 654.84 feet to a 1/2" rebar found at the Northwest corner of Lot 251.
- 2) S 10° 32' 10" W, 360.39 feet to a 1/2" rebar set.
- 3) S 87° 34' 53" E, 122.13 feet to a 1/2" rebar set at a point of curve to the left.
- 4) with said curve to the left whose elements are Delta = 91° 20' 40", R = 15.00, L = 23.91' and whose Chord bears N 46° 44' 47" E, 21.46 feet to a 1/2" rebar set at a point of curve to the left.
- 5) with said curve to the left whose elements are Delta = 08° 27' 11", R = 530.00, L = 78.19' and whose Chord bears S 03° 09' 08" E, 78.12 feet to a 1/2" rebar set at a point of curve to the left.
- 6) with said curve to the left whose elements are Delta = 80° 01' 32", R = 15.00, L = 20.95' and whose Chord bears N 47° 34' 07" W, 19.29 feet to a 1/2" rebar set.
- 7) N 87° 34' 53" W, 147.57 feet to a 1/2" rebar set at a point of curve to the right.
- 8) with said curve to the right whose elements are Delta = 0° 51' 59", R = 1475.16, L = 22.31' and whose Chord bears S 87° 08' 53" W, 22.31 feet to a 1/2" rebar set.
- 9) S 07° 33' 21" E, 254.62 feet to a 1/2" rebar set.
- 10) S 84° 58' 39" W, 105.92 feet to a 1/2" rebar set.
- 11) S 08° 33' 06" E, 601.73 feet to a 1/2" rebar set.
- 12) S 80° 15' 59" W, 816.18 feet to a 1/2" rebar set at a point of curve to the right.
- 13) with said curve to the right whose elements are Delta = 0° 10' 17", R = 1025.00, L = 3.06' and whose Chord bears S 03° 43' 24" W, 3.06 feet to a 1/2" rebar set.
- 14) S 03° 48' 32" W, 238.36 feet to a 1/2" rebar set at a point of curve to the left.
- 15) with said curve to the left whose elements are Delta = 81° 40' 38", R = 15.00, L = 21.38' and whose Chord bears S 37° 01' 47" E, 19.62 feet to a 1/2" rebar set at a point of curve to the right.
- 16) with said curve to the right whose elements are Delta = 06° 51' 59", R = 470.00, L = 56.33' and whose Chord bears N 74° 26' 07" W, 56.29 feet to a 1/2" rebar set.
- 17) N 71° 00' 07" W, 27.61 feet to a 1/2" rebar set at a point of curve to the left.
- 18) with said curve to the left whose elements are Delta = 105° 11' 12", R = 15.00, L = 27.54' and whose Chord bears N 56° 24' 12" E, 23.83 feet to a 1/2" rebar set.
- 19) N 03° 48' 32" E, 170.68 feet to a 1/2" rebar set.
- 20) N 79° 29' 16" W, 258.50 feet to a 1/2" rebar set.
- 21) S 02° 09' 21" W, 159.13 feet to a 1/2" rebar set at a point of curve to the left.
- 22) with said curve to the left whose elements are Delta = 05° 12' 19", R = 530.00, L = 48.15' and whose Chord bears N 82° 47' 40" W, 48.13 feet to a 1/2" rebar set.
- 23) S 14° 09' 11" W, 74.32 feet to a 1/2" rebar set at a point of curve to the left.
- 24) with said curve to the left whose elements are Delta = 102° 55' 49", R = 15.00, L = 26.95' and whose Chord bears N 37° 18' 44" W, 23.47 feet to a 1/2" rebar set at a point of compound curve.
- 25) with said curve to the left whose elements are Delta = 21° 13' 55", R = 475.00, L = 176.02' and whose Chord bears S 80° 36' 24" W, 175.01 feet to a 1/2" rebar set.
- 26) S 04° 07' 51" E, 297.49 feet to a 1/2" rebar set.
- 27) S 85° 52' 09" W, 155.00 feet to a 1/2" rebar set.
- 28) S 32° 33' 52" W, 164.18 feet to a 1/2" rebar set.
- 29) S 57° 51' 52" E, 72.11 feet to a 1/2" rebar set.
- 30) S 11° 55' 28" E, 212.03 feet to a 1/2" rebar set.
- 31) S 23° 57' 37" E, 229.08 feet to a 1/2" rebar set.
- 32) N 80° 29' 00" E, 114.30 feet to a 1/2" rebar set.
- 33) S 12° 21' 38" E, 349.45 feet to a 1/2" rebar set at a point of curve to the left.
- 34) with said curve to the left whose elements are Delta = 23° 55' 33", R = 325.00, L = 135.72' and whose Chord bears N 80° 48' 17" E, 134.73 feet to a 1/2" rebar set.
- 35) N 68° 50' 30" E, 42.90 feet to a 1/2" rebar set at a point of curve to the left.
- 36) with said curve to the left whose elements are Delta = 99° 35' 24", R = 15.00, L = 26.07' and whose Chord bears N 19° 02' 48" E, 22.91 feet to a 1/2" rebar set.
- 37) S 30° 44' 54" E, 43.88 feet to a 1/2" rebar set at a point of curve to the right.
- 38) with said curve to the right whose elements are Delta = 02° 13' 00", R = 975.00, L = 37.72' and whose Chord bears S 29° 38' 24" E, 37.72 feet to a 1/2" rebar set at a point of curve to the left.
- 39) with said curve to the left whose elements are Delta = 82° 37' 36", R = 15.00, L = 21.63' and whose Chord bears N 69° 50' 42" W, 19.81 feet to a 1/2" rebar set.
- 40) S 68° 50' 30" W, 58.69 feet to a 1/2" rebar set at a point of curve to the right.
- 41) with said curve to the right whose elements are Delta = 04° 45' 55", R = 375.00, L = 31.19' and whose Chord bears S 71° 13' 27" W, 31.18 feet to a 1/2" rebar set.
- 42) S 02° 43' 29" W, 295.84 feet to a 1/2" rebar set.
- 43) N 87° 10' 54" E, 28.71 feet to a 1/2" rebar set.
- 44) S 04° 26' 45" W, 391.58 feet to a 1/2" rebar set at a point of curve to the left.
- 45) with said curve to the left whose elements are Delta = 31° 25' 27", R = 275.00, L = 150.82' and whose Chord bears S 80° 32' 11" E, 148.94 feet to a 1/2" rebar set.
- 46) N 83° 45' 06" E, 118.00 feet to a 1/2" rebar set at a point of curve to the left.
- 47) with said curve to the left whose elements are Delta = 90° 00' 00", R = 15.00, L = 23.56' and whose Chord bears N 38° 45' 06" E, 21.21 feet to a 1/2" rebar set.
- 48) S 06° 40' 25" E, 80.00 feet to a 1/2" rebar set at a point of curve to the left.
- 49) with said curve to the left whose elements are Delta = 90° 00' 00", R = 15.00, L = 23.56' and whose Chord bears N 51° 14' 54" E, 21.21 feet to a 1/2" rebar set.
- 50) S 83° 45' 06" W, 118.00 feet to a 1/2" rebar set.

- 51) S 06° 40' 25" W, 447.68 feet to a 1/2" rebar set.
- 52) N 67° 45' 08" W, 367.82 feet to a 1/2" rebar set.
- 53) N 18° 38' 01" W, 183.69 feet to a 1/2" rebar set.
- 54) N 78° 19' 47" W, 483.61 feet to a 1/2" rebar set on the East line of said 476 acre tract also being the West line of said 449.985 acre tract.

THENCE with the fenced East line of said Bonnet tract and the West line of this tract the following six (6) courses:

- 1) N 12° 17' 50" W, 548.53 feet to a 1/2" rebar found.
  - 2) N 12° 08' 01" W, 687.05 feet to a 1/2" rebar found.
  - 3) N 12° 03' 56" W, 385.62 feet to a 1/2" rebar found.
  - 4) N 12° 11' 52" W, 295.58 feet to a 1/2" rebar found.
  - 5) N 12° 11' 10" W, 329.18 feet to a 1/2" rebar found.
  - 6) N 12° 07' 27" W, 203.29 feet to a 1/2" rebar found at the Southwest corner of a 37.13 acre tract conveyed to the Mound Trust in Vol. 908 Page 203 Deed Records of Williamson County, Texas.
- THENCE N 87° 41' 32" E, 1285.07 feet to a 1/2" rebar found at the Southeast corner of said 37.13 acre tract.
- THENCE N 11° 58' 43" W, 1210.57 feet to a 1/2" rebar found at the Northeast corner of said 37.13 acre tract, also being on the East line of said Bonnet tract.
- THENCE with the common line of said Bonnet tract and this tract the following four (4) courses:
- 1) S 81° 00' 41" E, 485.88 feet to a 1/2" rebar found.
  - 2) S 84° 36' 12" E, 281.86 feet to a 1/2" rebar found.
  - 3) N 11° 39' 46" E, 27.99 feet to a 1/2" rebar found.
  - 4) N 09° 35' 50" E, 164.58 feet to the POINT OF BEGINNING and containing 89.9949 acres more or less.

### TRACT 2:

Beginning at a 1/2" rebar found on the East line of a 176.83 acre tract conveyed to Bradley in Volume 472 Page 21 Deed Records of Williamson County, Texas also being the West line of said 449.985 acre tract and the Southwest corner of Lot 179 Gabriels Overlook Section One a subdivision recorded in Cabinet S Slides 218-229 Plat Records of Williamson County, Texas for the Northwest corner of this tract and the POINT OF BEGINNING.

THENCE through the interior of said 449.985 acre tract and with a line in common with said subdivision the following twenty six (26) courses:

- 1) N 71° 21' 59" E, 196.77 feet to a 1/2" rebar set.
  - 2) N 89° 30' 42" E, 497.95 feet to a 1/2" rebar set.
  - 3) S 52° 02' 45" E, 318.41 feet to a 1/2" rebar set at a point of curve to the left.
  - 4) with said curve to the left whose elements are Delta = 28° 58' 43", R = 275.00, L = 71.62' and whose Chord bears N 25° 22' 51" E, 71.42 feet to a 1/2" rebar set.
  - 5) N 17° 55' 11" E, 180.16 feet to a 1/2" rebar set at a point of curve to the left.
  - 6) with said curve to the left whose elements are Delta = 83° 55' 05", R = 15.00, L = 21.97' and whose Chord bears N 24° 02' 22" W, 20.06 feet to a 1/2" rebar set at a point of curve to the left.
  - 7) with said curve to the left whose elements are Delta = 09° 22' 03", R = 475.00, L = 77.66' and whose Chord bears S 70° 40' 56" E, 77.57 feet to a 1/2" rebar set at a point of curve to the left.
  - 8) with said curve to the left whose elements are Delta = 86° 42' 51", R = 15.00, L = 22.70' and whose Chord bears S 61° 16' 37" W, 20.60 feet to a 1/2" rebar set.
  - 9) S 17° 55' 11" W, 9.35 feet to a 1/2" rebar set.
  - 10) S 39° 19' 37" E, 480.56 feet to a 1/2" rebar set.
  - 11) N 58° 37' 27" E, 350.10 feet to a 1/2" rebar set.
  - 12) S 39° 34' 53" E, 294.43 feet to a 1/2" rebar set at a point of curve to the right.
  - 13) with said curve to the right whose elements are Delta = 14° 06' 34", R = 364.43, L = 89.74' and whose Chord bears N 63° 29' 53" E, 89.52 feet to a 1/2" rebar set.
  - 14) N 70° 32' 59" E, 10.00 feet to a 1/2" rebar set at a point of curve to the left.
  - 15) with said curve to the left whose elements are Delta = 90° 00' 00", R = 15.00, L = 23.56' and whose Chord bears N 25° 32' 59" E, 21.21 feet to a 1/2" rebar set.
  - 16) S 19° 27' 01" E, 80.00 feet to a 1/2" rebar set at a point of curve to the left.
  - 17) with said curve to the left whose elements are Delta = 90° 00' 00" R = 15.00, L = 23.56' and whose Chord bears N 64° 27' 01" W, 21.21 feet to a 1/2" rebar set.
  - 18) S 70° 32' 59" W, 10.00 feet to a 1/2" rebar set at a point of curve to the left.
  - 19) with said curve to the left whose elements are Delta = 37° 39' 45", R = 314.43, L = 206.69' and whose Chord bears S 51° 43' 17" W, 202.98 feet to a 1/2" rebar set at a point of compound curvature.
  - 20) with said curve to the left whose elements are Delta = 51° 38' 18", R = 25.00, L = 22.53' and whose Chord bears S 07° 04' 15" W, 21.78 feet to a point of reverse.
  - 21) with said curve to the right whose elements are Delta = 40° 16' 47", R = 50.00, L = 35.15' and whose Chord bears S 01° 23' 30" W, 34.43 feet to a 1/2" rebar set.
  - 22) S 23° 25' 22" E, 275.71 feet to a 1/2" rebar set.
  - 23) S 69° 54' 43" W, 730.05 feet to a 1/2" rebar set.
  - 24) S 19° 27' 01" E, 279.51 feet to a 1/2" rebar set.
  - 25) S 71° 56' 06" W, 38.68 feet to a 1/2" rebar set.
  - 26) S 19° 16' 14" E, 542.49 feet to a point in the center of the South San Gabriel River.
- THENCE with the center of the South San Gabriel River also being the South line of said 449.985 acre tract and this tract the following four (4) courses:
- 1) S 54° 30' 31" W, 191.16 feet to a point.
  - 2) S 45° 48' 04" W, 238.31 feet to a point.
  - 3) S 50° 15' 12" W, 397.69 feet to a point.
  - 4) S 38° 48' 24" W, 346.28 feet to a point begin the Southeast corner of a 176.83 acre tract conveyed to Frances Bradley in Vol. 472 Pg. 21 of the Official Records of Williamson County, Texas for the Southwest corner of this tract.
- THENCE with the fenced East line of said Bradley tract and West line of this tract the following eighteen courses:
- 1) N 19° 21' 11" W, 342.99 feet to a 1/2" rebar found.
  - 2) N 19° 55' 37" W, 65.69 feet to a 1/2" rebar set.
  - 3) N 19° 40' 37" W, 481.07 feet to a 1/2" rebar set.
  - 4) N 19° 54' 37" W, 567.01 feet to a nail found in a 10" Hackberry.

- 5) N 26° 38' 57" W, 11.60 feet to a nail found in a 11" Hackberry.
- 6) N 17° 49' 51" W, 44.52 feet to a nail found in a 10" Hackberry.
- 7) N 11° 42' 20" W, 37.04 feet to a nail found in a 12" Elm.
- 8) N 18° 58' 21" W, 446.51 feet to a 1/2" rebar found.
- 9) N 19° 13' 50" W, 162.13 feet to a 1/2" rebar found.
- 10) N 18° 55' 28" W, 203.14 feet to a 1/2" rebar found.
- 11) N 18° 38' 13" W, 245.34 feet to a 1/2" rebar found.
- 12) N 18° 49' 07" W, 65.25 feet to the POINT OF BEGINNING and containing 73.2088 acres more or less.

### TRACT 3:

Beginning at a 1/2" rebar found on the Southwest line of a 48.72 acre tract conveyed to Allen in Doc. No. 9853414 Official Records of Williamson County, Texas also being the East line of said 449.985 acre tract and at the most Northerly corner of Lot 91 Gabriels Overlook Section One a subdivision recorded in Cabinet S Slides 218-229 Plat Records of Williamson County, Texas for the most Easterly corner of this tract and the POINT OF BEGINNING.

THENCE through the interior of said 449.985 acre tract and with a line in common with said Gabriels Overlook Section One the following fourteen (14) courses:

- 1) S 33° 29' 46" W, 837.70 feet to a 1/2" rebar set.
  - 2) N 25° 08' 28" W, 361.47 feet to a 1/2" rebar set at a point of curve to the right.
  - 3) with said curve to the right whose elements are Delta = 08° 21' 55", R = 325.00, L = 47.45', and whose Chord bears S 67° 04' 08" W, 47.41 feet to a 1/2" rebar set.
  - 4) S 71° 15' 06" W, 172.39 feet to a 1/2" rebar set at a point of curve to the left.
  - 5) with said curve to the left whose elements are Delta = 90° 00' 00", R = 15.00, L = 23.56' and whose Chord bears S 26° 15' 06" W, 21.21 feet to a 1/2" rebar set.
  - 6) N 18° 44' 54" W, 80.00 feet to a 1/2" rebar set at a point of curve to the left.
  - 7) with said curve to the left whose elements are Delta = 90° 00' 00", R = 15.00, L = 23.56' and whose Chord bears S 63° 44' 54" E, 21.21 feet to a 1/2" rebar set.
  - 8) N 71° 15' 06" E, 172.39 feet to a 1/2" rebar set at a point of curve to the left.
  - 9) with said curve to the left whose elements are Delta = 09° 15' 34", R = 275.00, L = 44.44' and whose Chord bears N 66° 37' 19" E, 44.39 feet to a 1/2" rebar set.
  - 10) N 21° 34' 58" W, 382.32 feet to a 1/2" rebar set.
  - 11) N 75° 44' 52" E, 111.83 feet to a 1/2" rebar set.
  - 12) N 09° 01' 22" W, 90.56 feet to a 1/2" rebar set.
  - 13) N 20° 47' 40" E, 217.76 feet to a 1/2" rebar set on the Southwest line of said 48.72 acre tract for the most Northerly corner of this tract.
  - 14) S 59° 17' 16" E, 375.00 feet to a 1/2" rebar set at the Southwest corner of said 48.72 acre tract.
- THENCE S 60° 26' 46" E with the Southwest line of said 48.72 acre tract also being the Easterly line of this tract 323.72 feet to the POINT OF BEGINNING and containing 9.4160 acres more or less.